

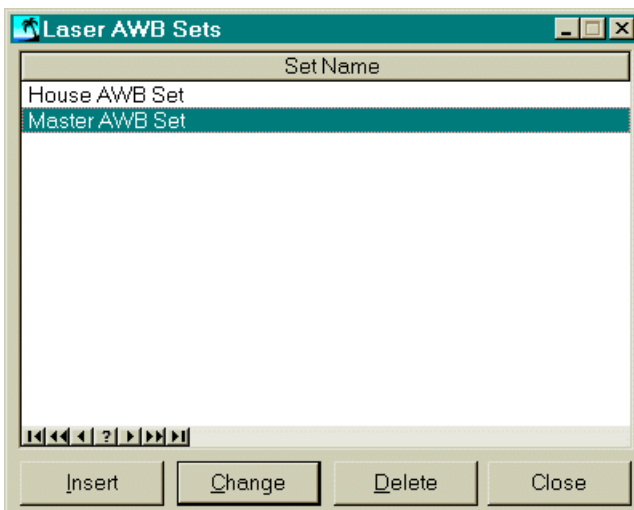
OASIS MULTI COPY LASER AWB

More Airlines are accepting Computer Generated Laser Air Way Bills. As of this writing it has been confirmed by several OASIS client sites that American Airlines and Varig Airlines are accepting LASER AWB's. You may wish to inquire with Airline carriers you conduct business with in order to verify, if they also accept these laser generated documentation.

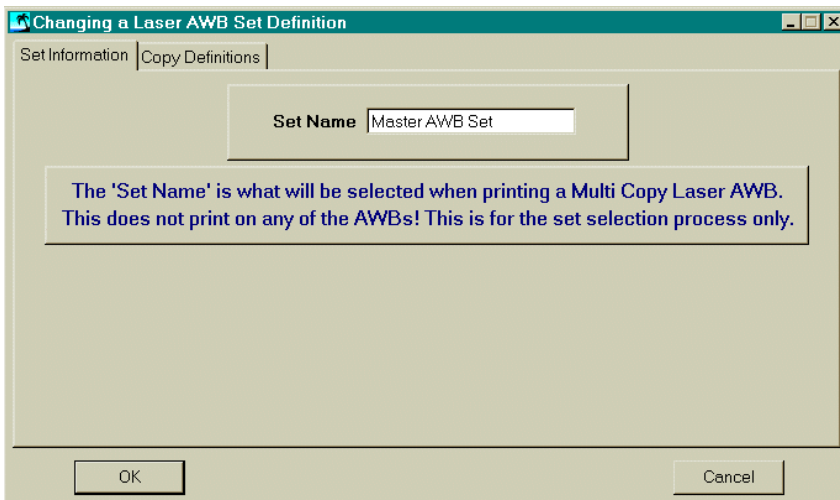
The 'Multi Copy Laser AWB' option in OASIS allows you to prints sets of AWBs just like the dot-matrix copies of the AWB. Groups of 'Sets' must be created to utilize this option.(Two defaults sets are included.)

Create or Edit a 'Set'

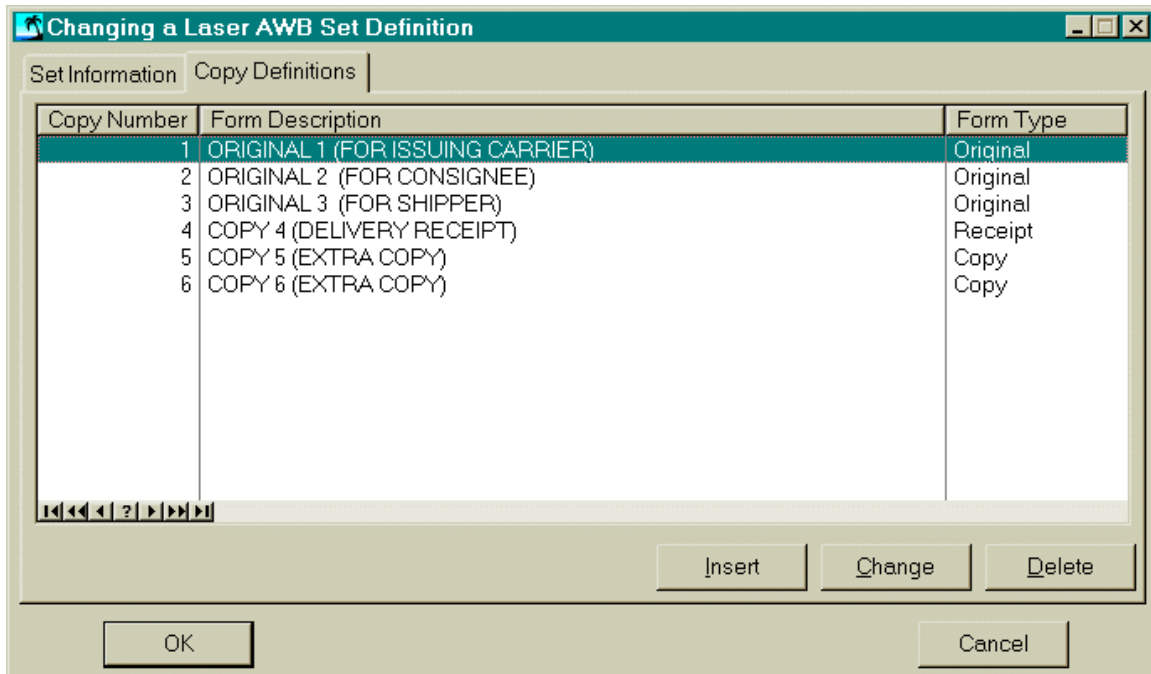
At the main screen of OASIS click on 'Maintenance' -> 'System Maintenance' -> 'Setup' -> 'Laser AWB Set Definitions'. You will be presented with the following screen:



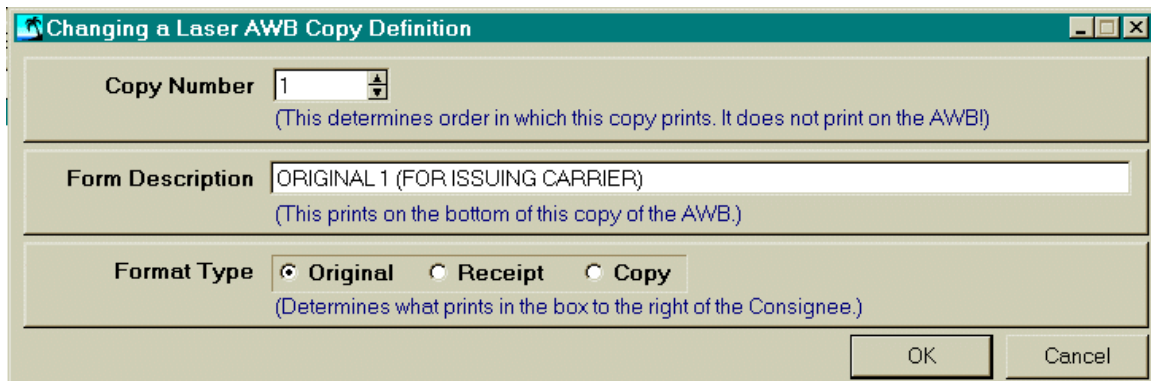
This screen shows all sets that have been created. Notice at this point you can Insert/Change/Delete any set definition. You can create as many sets as needed. For example purposes we will 'Change' a set:



Above and below are the AWB Set editor screens. Here you can add/delete copies and edit the 'watermark' that will print on the bottom of the Laser AWB. Please note that all copies of a set will print as ONE print job. The set noted bellow will print 6 copies. There is no limit on the number of copies you can set.



Clicking <Change> at this point will display the Laser AWB Copy Record screen:



- ⇒ The 'Copy Number' determines the order in which this copy is printed.
- ⇒ The 'Form Description' is the watermark that prints at the very bottom of each copy of the Laser AWB.
- ⇒ The 'Format Type' determines what is printed in the box to the right of the Consignee's information.

() Original

It is agreed that the goods described herein are accepted in apparent good order and condition (except as noted) for carriage SUBJECT TO THE CONDITIONS OF CONTRACT ON THE REVERSE HEREOF. ALL GOODS MAY BE CARRIED BY ANY OTHER MEANS INCLUDING ROAD OR ANY OTHER CARRIER UNLESS SPECIFIC CONTRARY INSTRUCTIONS ARE GIVEN HEREON BY THE SHIPPER, AND SHIPPER AGREES THAT THE SHIPMENT MAY BE CARRIED VIA INTERMEDIATE STOPPING PLACES WHICH THE CARRIER DEEMS APPROPRIATE. THE SHIPPER'S ATTENTION IS DRAWN TO THE NOTICE CONCERNING CARRIER'S LIMITATION OF LIABILITY. Shipper may increase such limitation of liability by declaring a higher value for carriage and paying a supplemental charge if required.

() Receipt

Received in Good Order and Condition

at (place)

on (date/time)

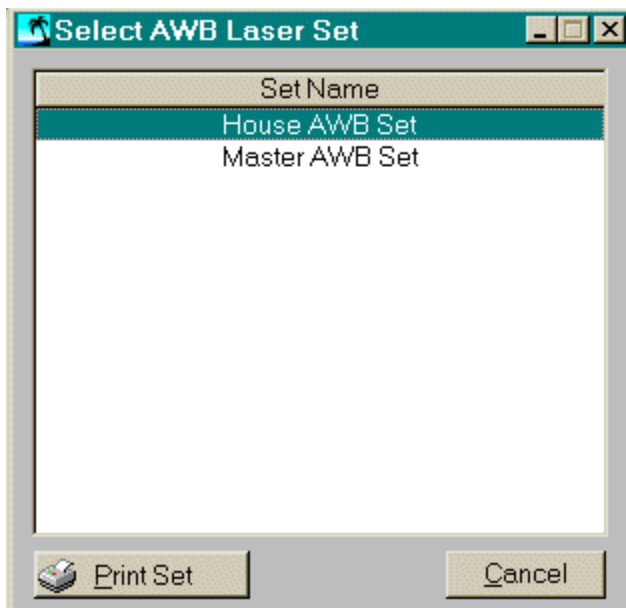
Signature of Consignee or his Agent

() Copy

The 'Copy' format does not print anything in this area.

Printing a 'Set':

To print a MultiCopy Laser AWB in OASIS you will need to click the <Multi Copy Laser> on the bottom of the AWB screen. If there is only one 'Set' created it will automatically go to the printer selection screen. If there is more than one 'Set' created you will be presented with the following screen:



Click on the set you wish to print and click on the <Print Set> button. Keep in mind that you will be returned to this screen after you print the set. As an example, this will allow you to send one set to a printer and then a second set to a fax program.